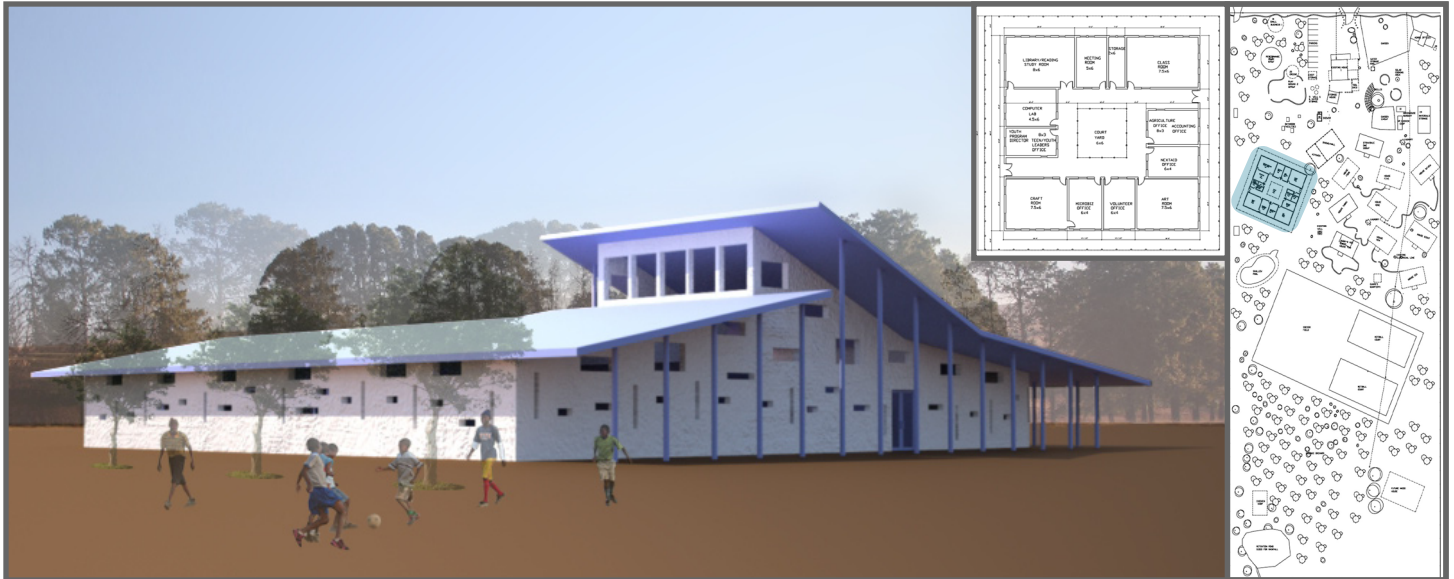


## Adopt-A-Project Program Project Specification Sheet

NEXTAID YOUTH WITH A VISION COMMUNITY CENTER AND CHILDREN'S RESIDENTIAL VILLAGE IN DENNILTON, SOUTH AFRICA



Designed by lead architect/natural builder Joseph Kennedy, Geoffrey Collins of SCO Studio and volunteer architect Louise Lakier. Rendering by Geoffrey Collins. Plans by Louise Lakier.

### ▲ Main Center

#### Purpose

The main center will serve as the focal point and hub of the NextAid Youth With A Vision Community Center and Residential Children's Village. It will be a resource for children living in the village, as well as neighboring youth and local residents. Education, enrichment and empowerment programs will be held in this facility through after-school classes, adult education and special seminars and trainings. Sustainable economic development will be emphasized by providing offices, facilities and learning opportunities for the local community to run their own micro-enterprises that generate income for themselves and the overall operation of the center and orphan care.

#### Size

Approx 1,200 sq ft. interior and 1,200 sq. ft. exterior area

#### Features

- Library, Computer Lab, Classroom, Craft Workshop, Art Studio, Conference Room, various offices and an outdoor courtyard.
- See Adopt-A-Project one sheets for descriptions and cost information of individual components for the main center.

#### Methods & Materials

- Compressed earth block wall construction (bricks made locally)
- Metal roof with water catchment (gutters and cistern)
- Electrical (lighting and power)

#### Cost

\$110,000

*Your contribution is tax-deductible. You will be acknowledged in creatively designed signage on the structure in Dennilton and if you choose, on our website and in our materials.*



**NextAid**

#### Background

NextAid is a Los Angeles-based non-profit organization committed to developing and implementing environmentally sustainable, economically and socially empowering solutions to the AIDS orphan pandemic. Through grass-roots efforts, NextAid provides opportunities for concerned individuals across the world to make a tangible difference.

Our flagship project is successfully underway in a poverty-stricken rural town called Dennilton, two hours northeast of Johannesburg. Working with ecological architects and experienced natural builders, NextAid broke ground in July 2005 kicking off the construction of the NextAid Youth Community Center and Children's Residential Village.

Now six buildings are completed including a performance space, energy-efficient outdoor kitchen and seating area, two earth-bag offices, and a straw bale house. The village will serve as a safe home for 50 children, a multi-purpose center for the greater community, and a model of best practices for future projects throughout Africa.

#### Contact

Wendy Cross, NextAid Program Director  
wendy@nextaid.org

#### Website

[www.nextaid.org/adoptaproject.htm](http://www.nextaid.org/adoptaproject.htm)